



CLUB
NÁUTICO
PUERTO
SHERRY



CAMPEONATO
DE ESPAÑA
SNIFE MASTER
2021



LOCATION



Puerto Sherry is a magnificent marina with more than 842 moorings and second to none marina services and facilities.

It is located in the heart of the Bay of Cádiz, one of the best race courses in southern Europe, in El Puerto de Santa María, near the cities of Jerez de la Frontera, which has an Airport, Rota, Puerto Real and Cádiz.



GAS STATION



FREE PARKING



NAUTICAL WORKSHOPS
AND SHOPS



CHANNEL 9



TOILETS AND
SHOWERS



LAUNDRY



HOTEL AND
APARTHOTEL



SUPERMARKET



PHARMACY



BEACH CLUBS

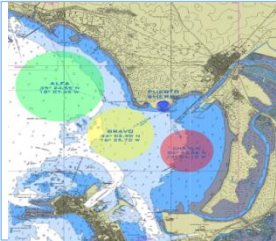


RESTURANTS

RACE COURSE



- It is 7 miles (11 km) long and up to 5 miles (8 km) wide.
- It marks the coast of the province of Cádiz, in southwestern Spain.
- It receives the Guadalete River and is partially protected by the narrow Isle of León, on which the major port of Cádiz is located.



- Prevailing winds from Levante and Poniente
- El Puerto has perfect conditions for sailing with 12-18 knots/annual media.
- With an average annual temperature of 21 ° C
- The water sea conditions use to be very quiet and warm.
- The tidal range is about 2 metres and tidal currents are generally about 2 Knots.



- Ports along the bay of Cádiz:
 - Rota to the North
 - El Puerto de Santa María y Puerto Sherry to the NE
 - Puerto Real to the East
 - San Fernando to the South

SERVICES



Puerto Sherry's facilities and its weather conditions make it the perfect place to organize regattas and enjoy free time with everything you might need at your fingertips.



THE ASFALT SLIPWAY



- The asphalt slipway allows access to the sea to all types of dinghy sailing
- It stands out for its length, with **167 meters** long, data that places it as the largest asphalt slipway in Spain and one of the longest in the world.
- The asphalt slipway of Puerto Sherry also offers the following **services**:



STAGING
AREA



LOCKERS



WATER
POINTS



SAILORS



SECURITY



CHAMPIONSHIPS



Thanks to the Puerto Sherry facilities, it has hosted high-level events such as:



ACCOMODATION



CLUB
NÁUTICO
PUERTO
SHERRY



CAMPEONATO
DE ESPAÑA
SNIFE MASTER
2021



Hotel Puerto Sherry

Four-star hotel with 60 bedrooms overlooking Puerto Sherry marina or San Antón pine. It has a wide range of services and amenities .

www.hotelpuertosherry.com

Suites Puerto Sherry

Enjoy the privacy of your own home with the services of a luxury hotel. 33 apartments with magnificent views of the marina and the Bay of Cádiz.

www.lassuitesdepuertosherry.com



FAMILY & FRIENDS

The Snipe master is not only an event organized for sailors, your family and friends will also participate in the event. You can enjoy many activities:

- Opening ceremony
- Awards ceremony
- Sealing meals
- Kiosk on the asphalt slipway
- And many more...



CONTACTS



CLUB
NÁUTICO
PUERTO
SHERRY



CAMPEONATO
DE ESPAÑA
SNIPE MASTER
2021

Rafael Martín-Prat

Phone: +34 617 422 888

velaligera@clubnauticopuertosherry.com

Patricia Carrión

Phone: +34 646 839 770

info@clubnauticopuertosherry.com



CLUB
NÁUTICO
**PUERTO
SHERRY**



CAMPEONATO
DE ESPAÑA
**SNIPE MASTER
2021**