

Ready, GO!

Prepare your boat to be compliant



by Antonio Bari for Snipetoday

Membership

To enter any race, you **MUST** be SCIRA member and display the sticker on the starboard side of the hull. You can join directly with SCIRA or, in some countries, through the National Secretary.



Measurement Certificate

Your boat must have a valid Measurement
Certificate to present to the regatta
organizers.



Snipe Class International Racing Association
MEASUREMENT CERTIFICATE N. _____

Hull number _____ Year of manufacture _____

Builder _____ Model _____

Weight _____ Corrector weights _____

Mast builder _____ Corrector weights _____

Moi value _____ kg/m²

Owner _____

Country _____

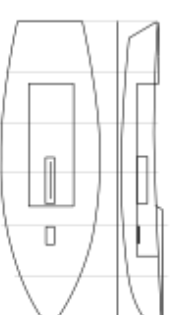
Measurer signature _____

SCIRA stamp# _____ (nation and number)

Date of measurement _____

This certificate is not valid until signed and stamped by the N.S. This certificate indicates that the boat has a registered MDS on file at SCIRA office.

National Secretary stamp and signature _____



Mark corrector weights here



THIS CERTIFICATE REMAINS WITH THE OWNER OF THIS SNIPE.
IT CAN BE REPLACED BY REMEASUREMENT.

Age

The minimum age to enter any Snipe regatta is 10 years.
Junior up to 21 years.
Master from 45 years.



Safety

The mandatory safety equipment is:

- Two approved buoyancy aids
- One paddle or oar
- A single piece 15m long 8mm dia floating towing line **not to be stored in the water-tight tanks.**



Sails - 1

- Must be measured and stamped before racing.
- Shall display the SCIRRA royalty.
- Max two suits can be measured at an event.



Sails - 2

- Nationality to be the one where the boat is registered.
- Letters and numbers of the same colour.
- Digital or universal numbers not allowed.
- Numbers shall be of a registered boat.
- If different from the hull number, the change must be requested to the R.C.



Rudder- 1

The boat must have a security system to prevent the rudder from detaching when the boat is capsized.



Measurements-1

The above are the minimum measurement controls at International events.

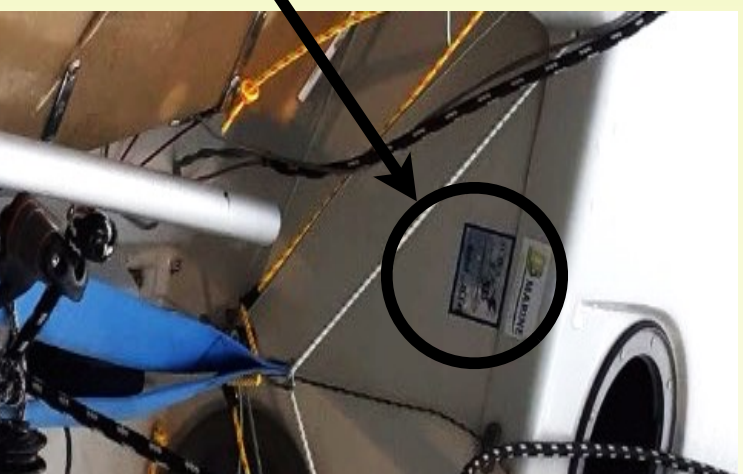
We may call it **Level 0**.

To enter any National or International Championship the boat must have a MDS on file at the SCIRA Office.



Corrector weights

- Corrector weights must be fixed and visible wherever placed
- Max. amount 15kg
- Position to comply with the MOI
- A SCIRIA decal showing the amount and location of the corrector weights shall be displayed



Daggerboard - 1

The retaining system shall be either a tablet and/or a hook.

The retaining line shall be max 610mm long, from the top of the daggerboard case to the inner part of the shackle.

The shackle or carabiner shall be metal and directly fixed to the daggerboard.



Daggerboard - 2

The stripe must be 350mm long and 25mm wide.

When the stripe is even with the top of the deck, the board must stretch out from the bottom at least 305mm.



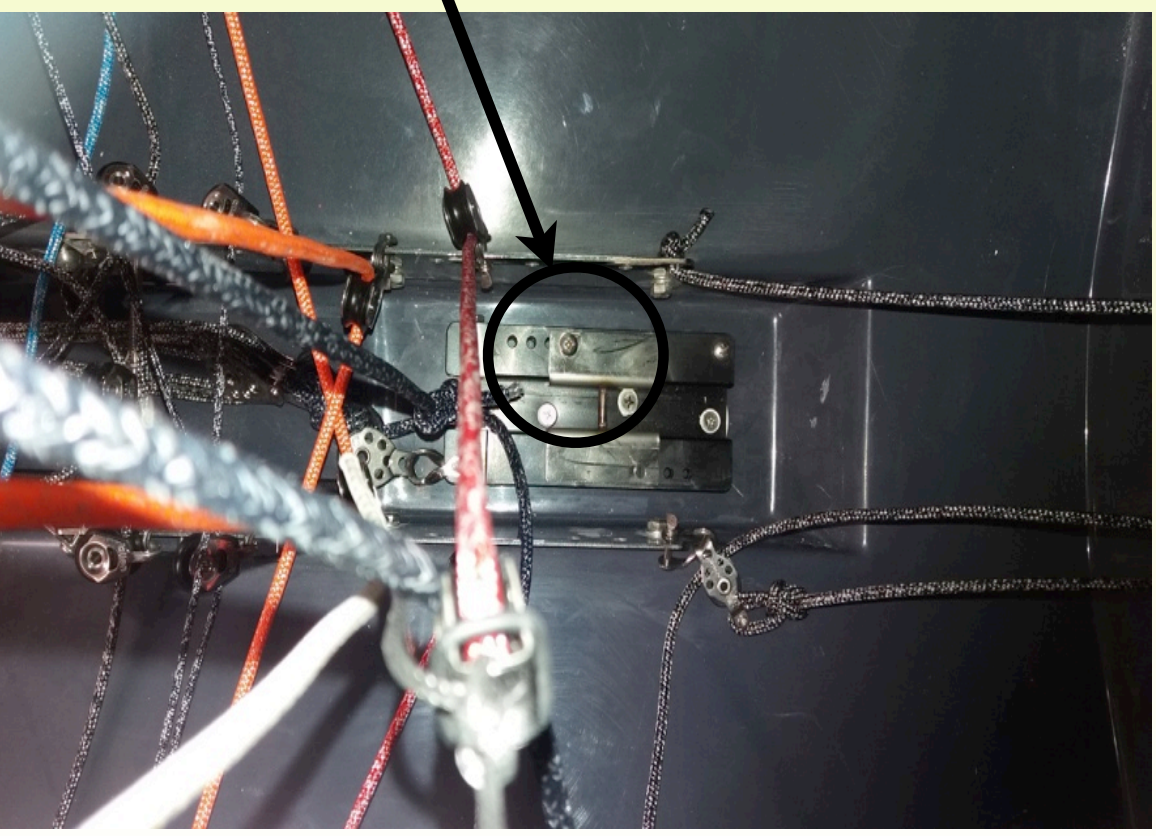
Mast step

The position is free.

Only one transverse pin is allowed.

Sliding steps must be blocked with a screw or bolt and nut.

Not adjustable while racing.



Measurement-2

The above are the minimum measurement controls at North and South American Champs and National Championships (unless differently decided by the N.S.).
This is **Level 1**.



Boat weight

The min. Weight is 172.8kg

Weight includes

- Mast with standing rigging and fittings
- Boom
- Whiskerpole
- Rudder, tiller, extension
- Daggerboard
- Main and jib sheets
- Compass
- Rigging and fittings

Weight does not include tow line, paddle, buoyancy aids and sails



Sails - 3

In 2011 the SCIRRA adopted a different system to measure the sails dimensions, switching from the "grommets measurement" to the "edges measurement".

This system is widely used by other classes and is the official WS system.



Jib attachment

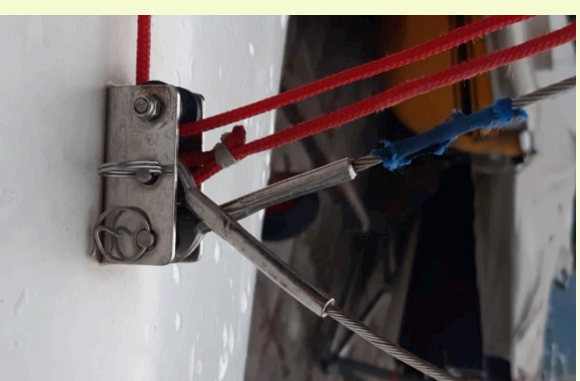
The maximum pin hole diameter is 6mm.

The center of the hole shall be:

- minimum 279mm from the Hull Datum Point.

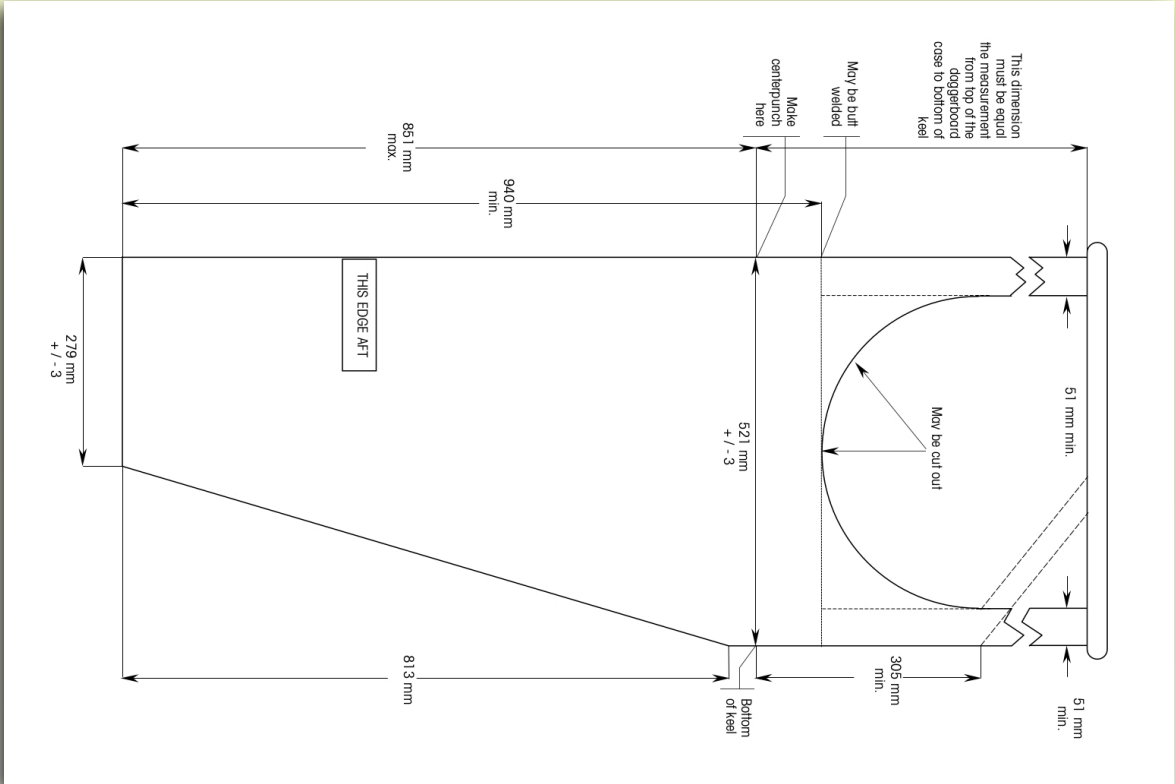
- maximum 45mm above the sheer line.

The jib must be capable of being disconnected without disconnecting the forestay.



Daggerboard - 3

Dimensions are checked



Measurement-3

The above are the minimum measurement controls at the WE&O and European Championships.

This is **Level 2**.

To enter these Championships the boat must have a MOI test on file at the SCIRA Office



Rudder - 1

Min weight 2.72kg

Corrector weights allowed up to

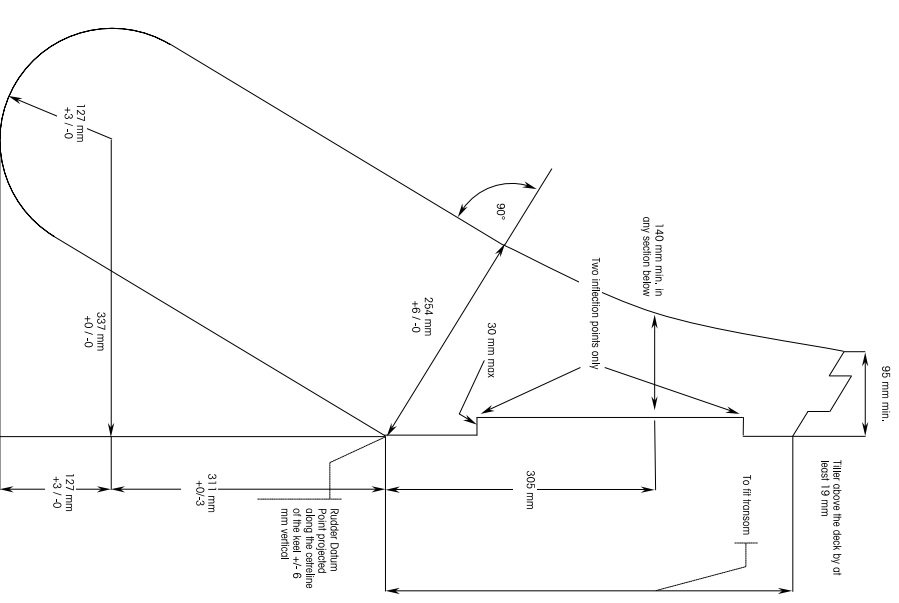
- 250gr if the boat is from 1.1.2015
- 450gr if the boat is before 1.1.2015



Rudder - 2

Boat built before 26.2.2018

- Any allowed design
- Boat built from 26.2.2018
- Design approved in 2015 (see drawing)



Mast

Check the stopper at the top

Spreaders cannot be adjusted while racing

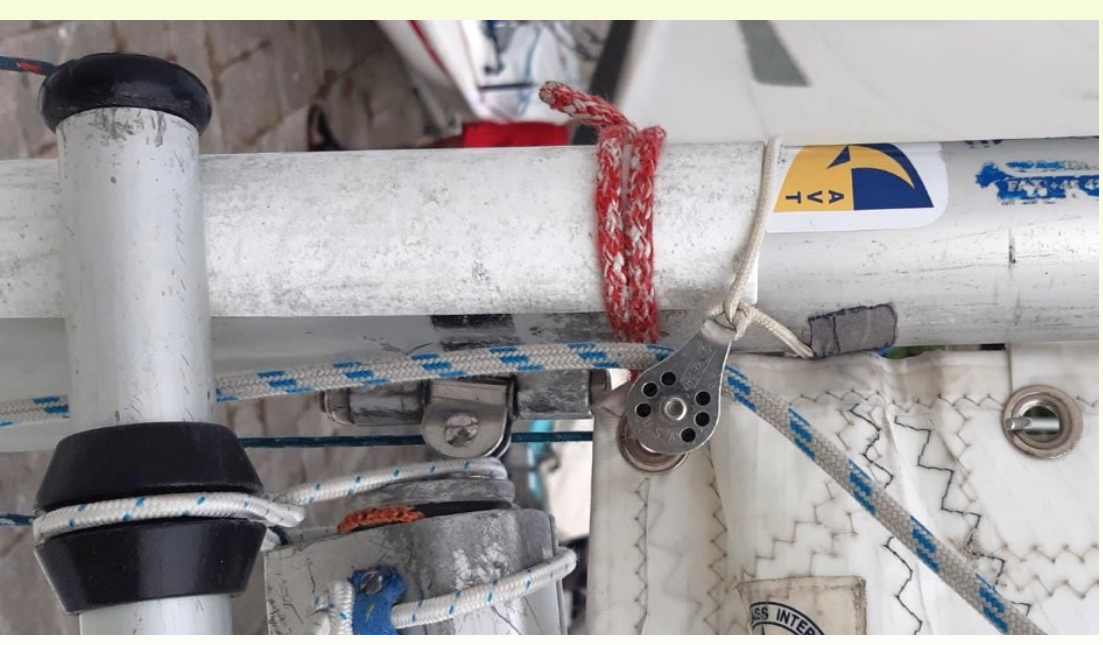
The pole launcher block shall not extend from the

forward side of the mast

Minimum weight 9.1kg

Corrector weights allowed up to 100gr.

Stays shall be metal. Halyards can either be metal or textile, excluding PBO.



Boom and pole

Check the stopper at boom end
The whiskerpole shall be max 2642mm
long



Moment of inertia-1

Rule introduced when the GRP construction was approved.

Grants the homogeneity of the construction, preventing weak hulls.

There is no direct relationship between a low MOI and the boat speed.

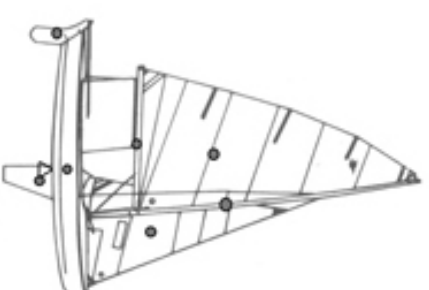
$$I = \frac{2.6233m^2CT^2}{4 \times 3.1416^2} = 0.1746CT^2$$



Moment of inertia-2



How the MOI is checked



The true MOI ...

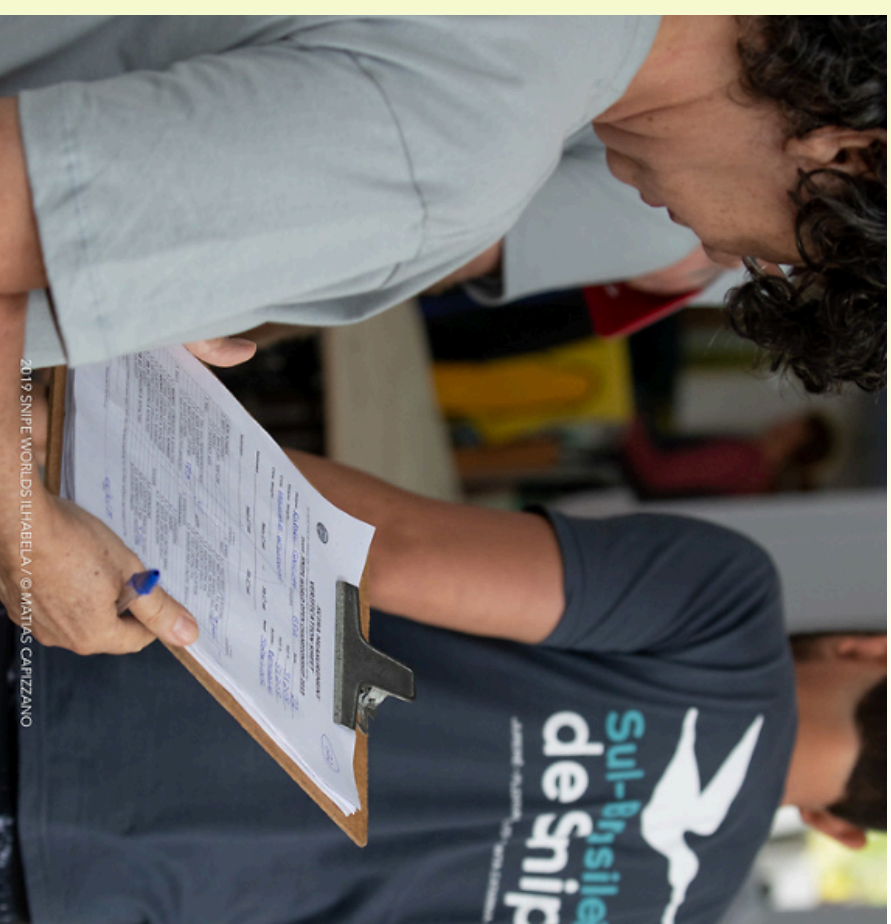
Measurement-4

The above are the minimum measurement controls at the Junior and Open World Championships.
This is **Level 3**.



@Home Measurement

To reduce the measurement time at large events, the Organizing Committees can request the competitors to perform some measurements at home certified by the National Secretaries and the National Measurers.



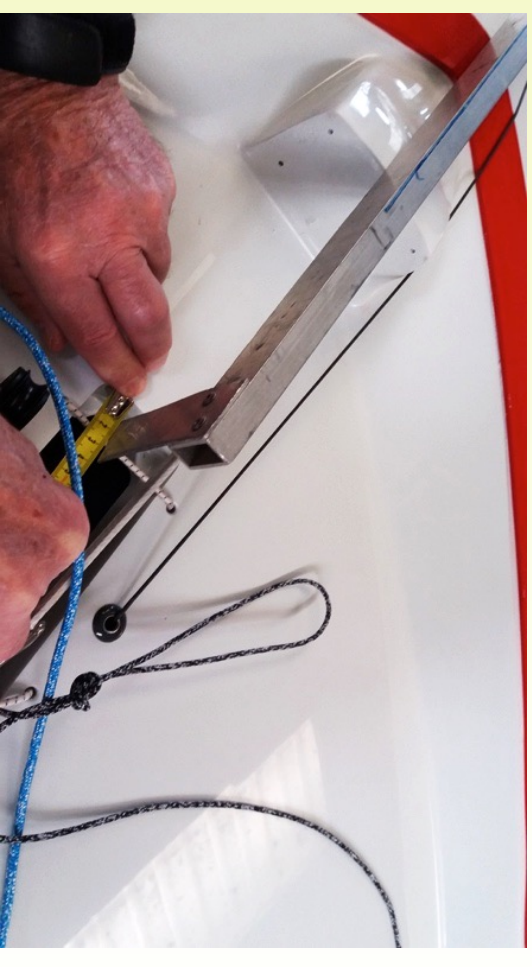
Always on

The following rules compliance may be or may not be checked, but complaint is mandatory in **any** Snipe race.



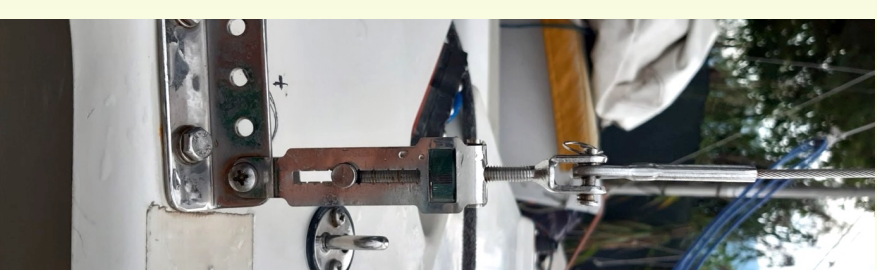
Mast partner

Minimum distance from the Hull
Datum Point is 1494mm



Shrouds adjusters

Any system is allowed
Not adjustable while racing



Electronics

Only

- Clock
 - Stopwatch
 - Compass
- are allowed

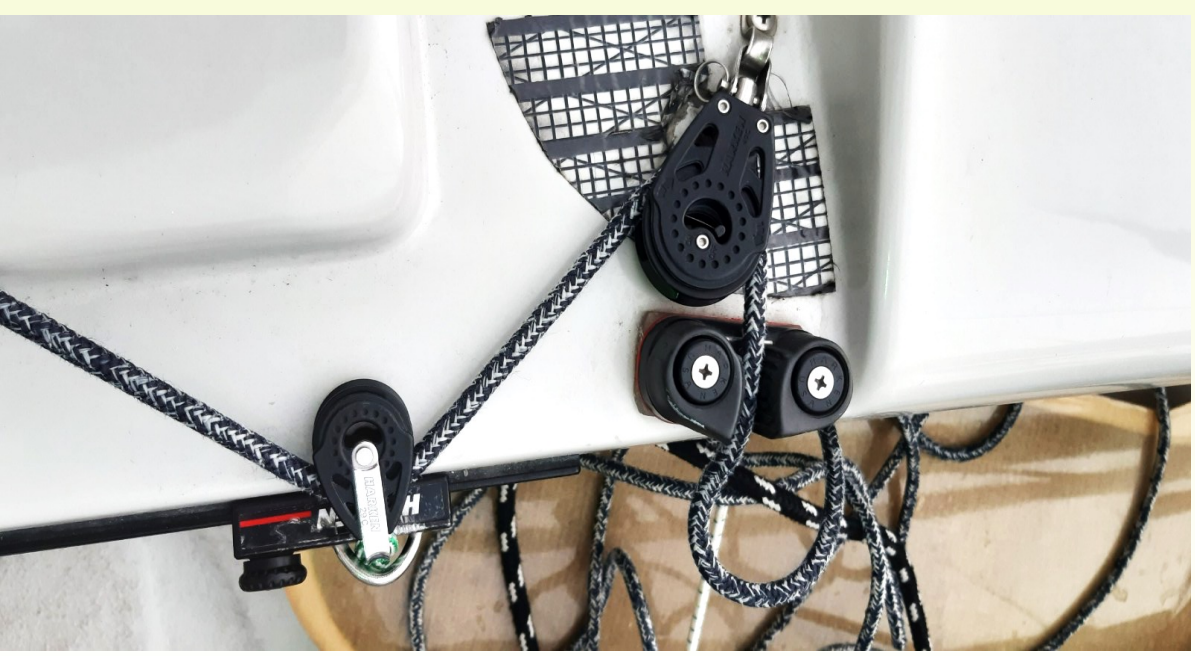
VHF o GPS only if provided by the organization.



Use of carbon

Carbon is allowed in

- Running rigging
- Fittings
- Compass support
- Tiller extension
- Mast pusher/puller
- Splashrail (if not moulded with the deck)



Sheets and halyards

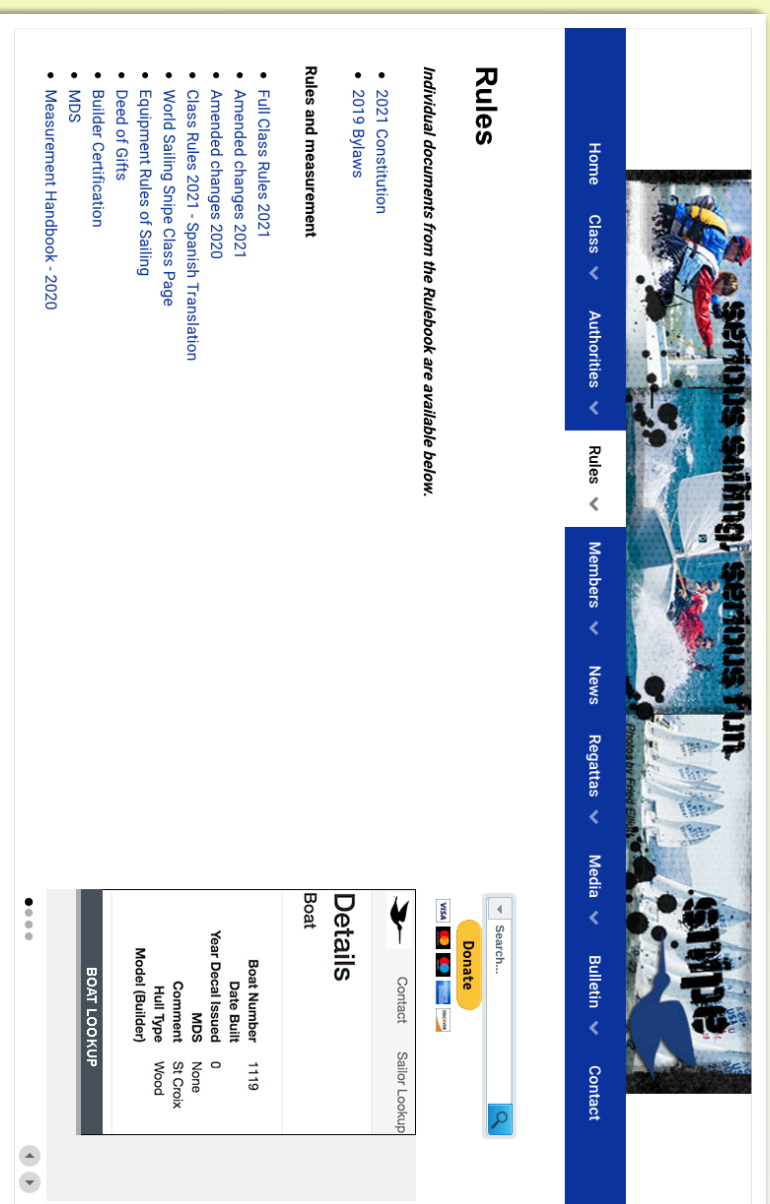
The following materials are allowed:

- Dyneema
 - Spectra
 - Vectran
 - Kevlar
 - Polyester
- PBO (Zylon) and carbon not permitted



Where to find information?

On the snipe.org website



- Messtrémeur Handpook - 2020
- MDS

Appendix 1: the 2001 turning point

In 2001 the following items were standardized:

- Position and diameter of the rudder and transom fittings;
- Daggerboard case height;
- Double bottom height and mast length;
- No limit to the mast step position - fixed mast partner position.



Appendx 2: The rudder shape development

Nineties: first changes to the shape

Early 2K: requests for the correct rule interpretation

2015: dimensions detailed

2018: new Class Rules

2020: rudder shape established on pre and post
2018 boats



Appendix 3: The Class Rules development

Originally designed for home manufacturing.
Continuously updated to follow the materials
development and building technologies.
Revisited in the seventies with more strict tolerances.
Reviewed in 1996 to obtain a coherent structure.
Completely rewritten in 2018 to use the World
Sailing International Classes template.

Effective date: 2021-01-01
Status: Approved



Class Rules

Snipe Class International
Racing Association



The Snipe was designed in 1931 by William F. Crosby and was
adopted as a World Sailing class in 1932.

sport / nature / technology

Appendix 4: The Measurer's Handbook

A step by step manual showing the correct procedures to completely measure a Snipe, the measurers' duties, the requirements to perform the measurement at any event.



Photo credits:Matias Capizzano, Michele Postinghel, Antonio Bari

