

Getting started for the racing season

How to get your boat compliant with the rules



Membership

To enter any race, you **MUST** be SCIRA member and display the sticker on the starboard side of the hull. You can join directly with SCIRA or, in some countries, throu the National Secretary.



Measurement Certificate

Your boat must have a valid Measurement
Certificate to present to the regatta
organizers.



Snipe Class International Racing Association
MEASUREMENT CERTIFICATE N. _____

Hull number _____ Year of manufacture _____

Builder _____ Model _____

Weight _____ Corrector weights _____

Mast builder _____ Corrector weights _____

Moi value _____ kg/m²

Owner _____

Country _____

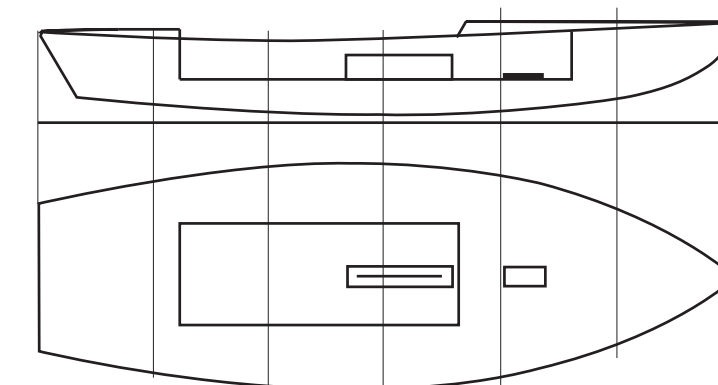
Measurer signature _____

SCIRA stamp# _____ (nation and number)

Date of measurement _____

This certificate is not valid until signed and stamped by the N.S. This certificate indicates that the boat has a registered MDS on file at SCIRA office.

National Secretary stamp and signature _____



Mark corrector weights here



THIS CERTIFICATE REMAINS WITH THE OWNER OF THIS SNIPE.
IT CAN BE REPLACED BY REMEASUREMENT.

Boat weight

The min. Weight is 172.8kg

Weight includes

- Mast with standing rigging and fittings
- Boom
- Whiskerpole
- Rudder, tiller, extension
- Main and jib sheets
- Compass
- Rigging and fittings

Weight does not include tow line, paddle, buoyancy aids



Corrector weights

Corrector weights must be fixed and visible wherever placed

Max. amount 15kg

Position to comply with the MOI

A SCIRA decal showing the amount and location of the corrector weights shall be displayed



Jib tack

The pin hole shall be max 6mm dia.
The centre of the pin shall be
max 279mm from the Hull Datum Point
Max 45mm above the sheer
The jib shall be disconnected without
disconnecting the forestay



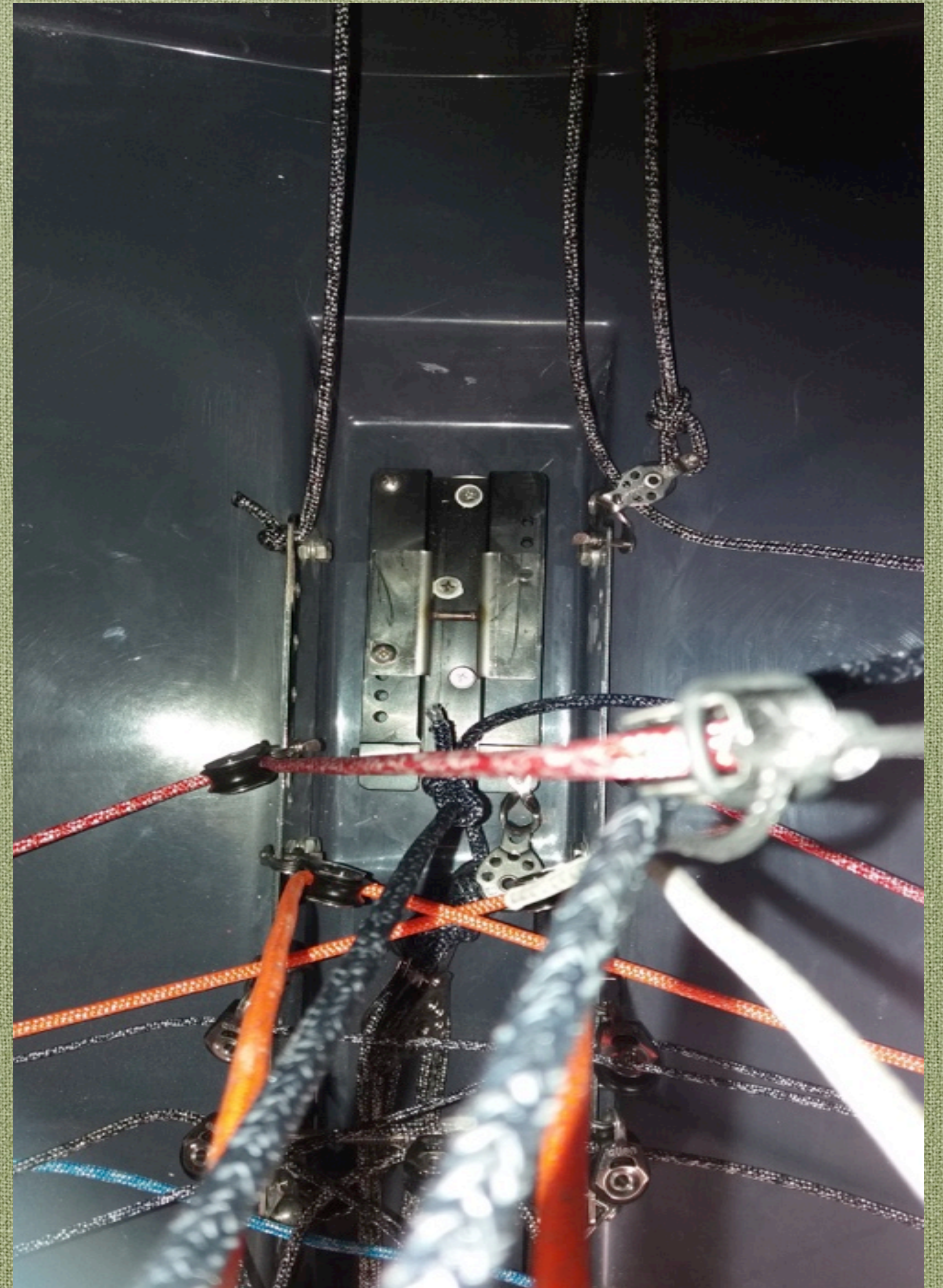
Mast step

The position is free

Only one transverse pin is allowed

Sliding steps must be blocked with a screw or bolt and nut

Not adjustable while racing



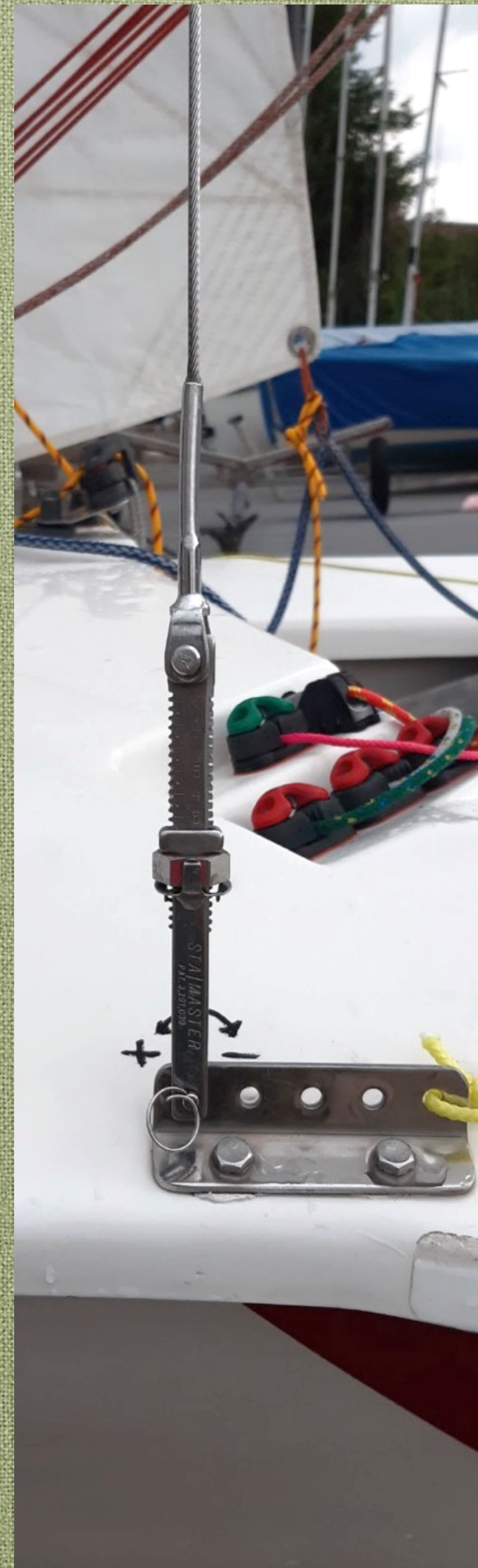
Mast partner

Minimum distance from the Hull
Datum Point is 1494mm



Shrouds adjusters

Any system is allowed
Not adjustable while racing



Daggerboard - 1

The stripe must be 350mm long and 25mm wide

When the stripe is even with the top of the deck, the board must stretch out the bottom max 305mm

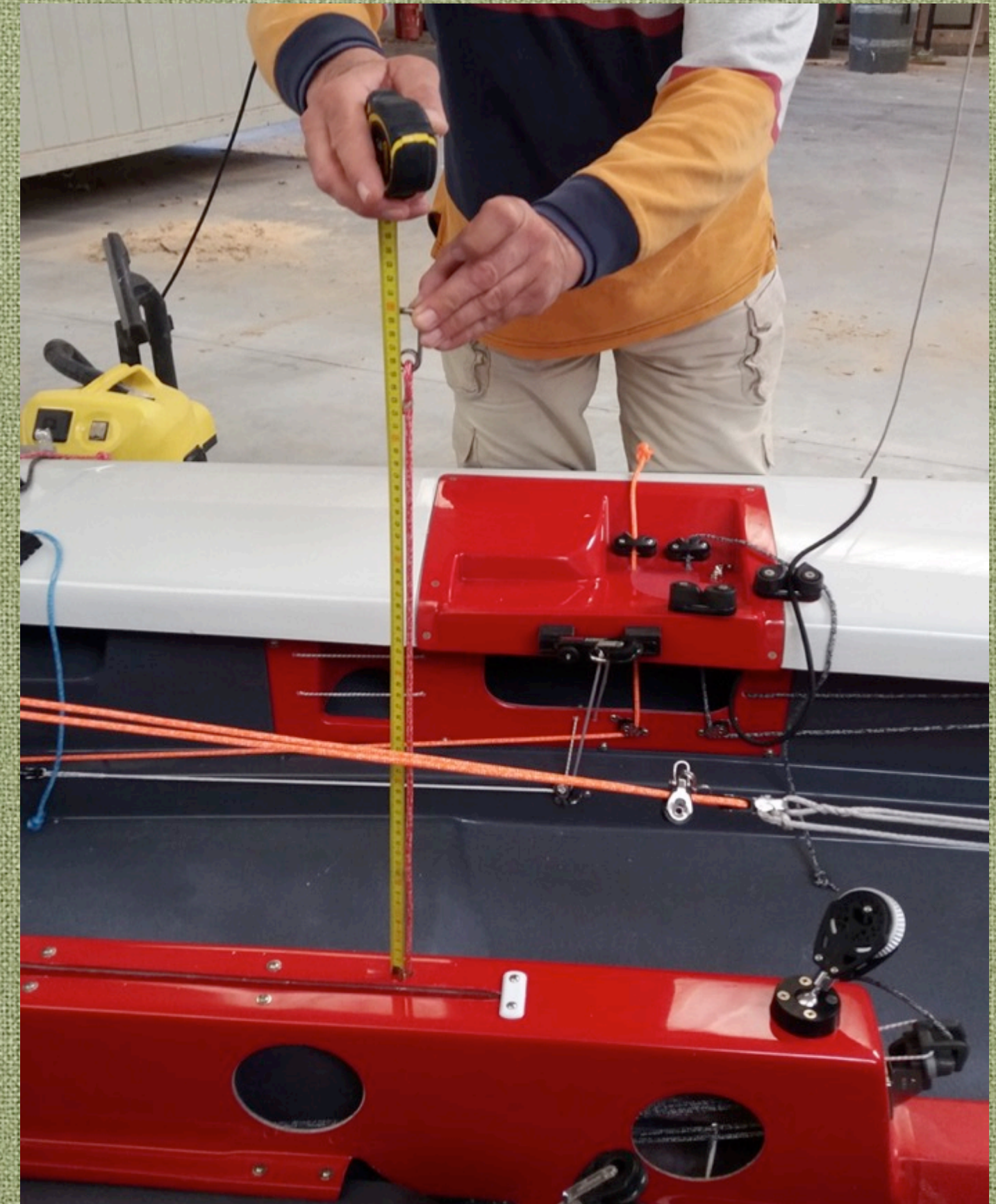


Daggerboard - 2

The retaining system shall be either a tablet and/or a hook

The retaining line shall be max 610mm long, from the top of the daggerboard case to the inner part of the shackle

The shackle or carabiner shall be metal



Rudder - 1

Min weight 2.72kg

Correctors weight allowed up to

- 250gr if the boat is from 1.1.2015
- 450gr if the boat is before 1.1.2015



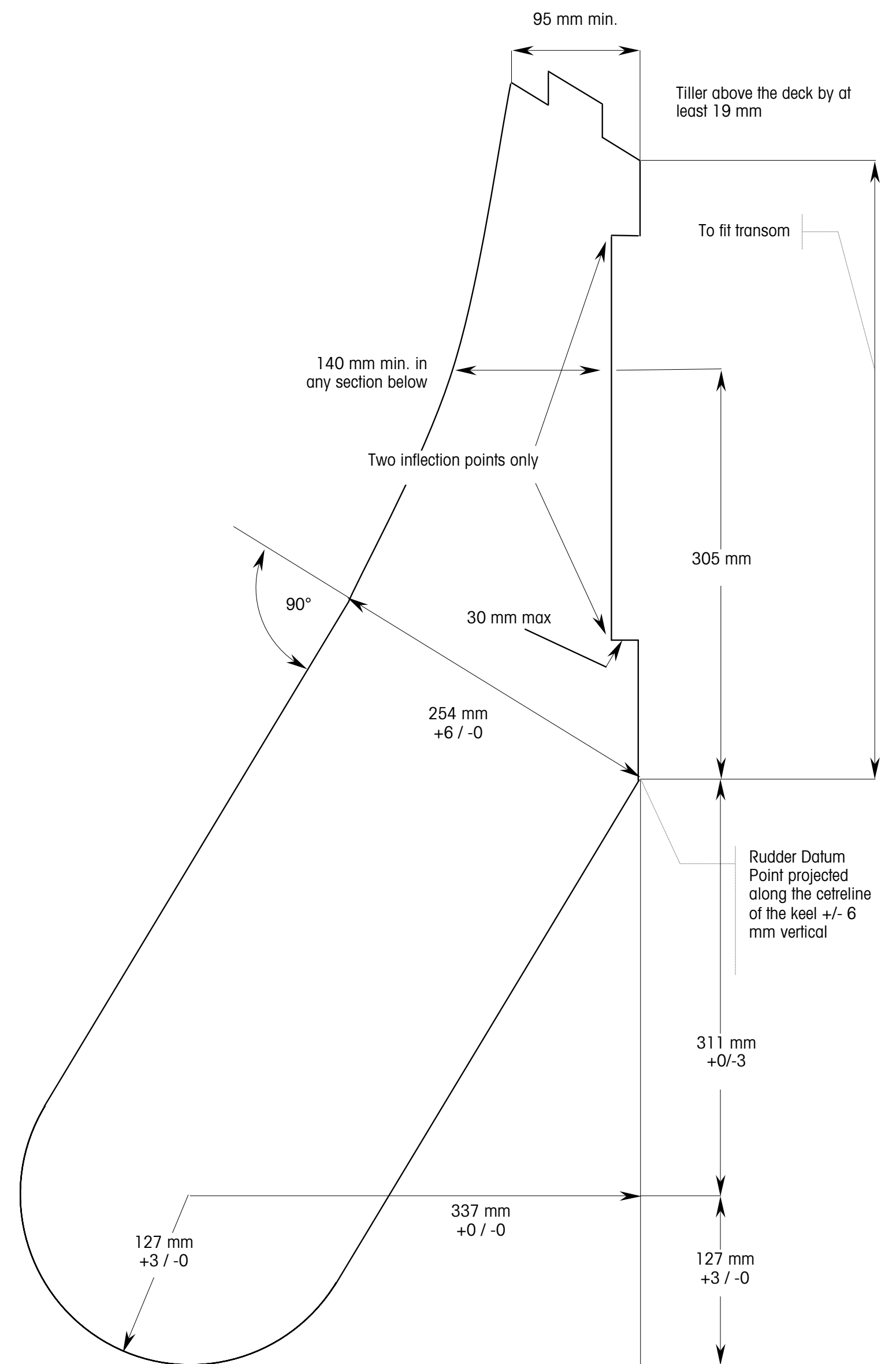
Rudder - 2

Boat built before 26.2.2018

Any allowed design

Boat built from 26.2.2018

Design approved in 2015
(see drawing)



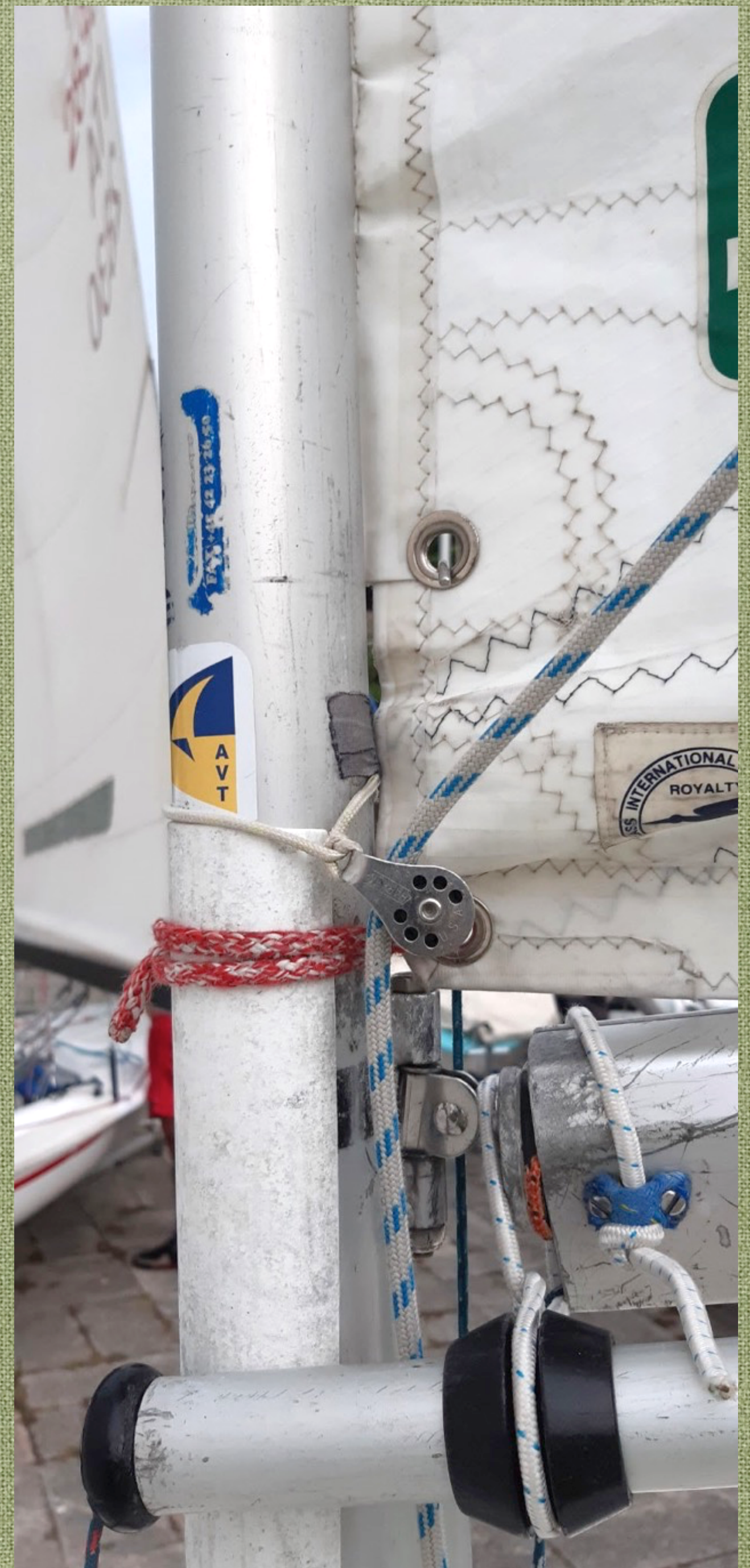
Boom and pole

Check the stopper at boom end
The whiskerpole shall be max 2642mm
long



Mast

Check the stopper at the top
Spreaders cannot be adjusted while racing
The pole launcher block shall not extend
from the forward side of the mast
Minimum weight 9.1kg
Corrector weights allowed up to 100gr



Sails - 1

Must be measured and stamped before racing

Shall display the SCIRA royalty

Max two suits can be measured at an event



Sails - 2

Nationality to be the one where the boat is registered

Letters and numbers of the same colour

Digital or universal numbers not allowed

Numbers shall be of a registered boat

If different from the hull number, the change must be requested to the R.C.



Use of carbon

Carbon is allowed in
Running rigging
Fittings
Compass support
Tiller extension



Photo credits: Michele Postinghel, Antonio Bari

