

## SCIRA Measurement Data Sheet

To be used with the 80/20 true baseline measurement frame

**For boats built from January 1st, 2018.** For older boats use the MDS in force in the year of manufacturing

**Owner** \_\_\_\_\_ **Date** \_\_\_\_\_

**Hull** \_\_\_\_\_ **Builder** \_\_\_\_\_ **Material** \_\_\_\_\_

NEW MOULD: FIRST  OR  OF 5      CERTIFICATION RENEW  Y/N

DO NOT COMPLETE IF FROM A CERTIFIED MOULD

<b>Chine</b>						
	Height				Width	
Station	Starboard	Port	Total	Allowable Range	Actual	Allowable Range
1				838-864		527-540
2				724-749		991-1003
3				673-699		1232-1245
4				680-705		1270-1283
5				762-787		1137-1149
Transom				902-927		952-965

<b>Sheer</b>						
	Height				Width	
Station	Starboard	Port	Total	Allowable Range	Actual	Allowable Range
1				1499-1549		895-921
2				1391-1441		1346-1372
3				1333-1384		1511-1537
4				1321-1372		1473-1499
5				1321-1372		1270-1295
Transom				1384-1435		1022-1048

<b>Keel</b>				
Station	Height		Width	
	Actual	Allowable Range	Actual	Allowable Range
400mm		223-235		
1		162		Min 51
2		89-101		99-105
3		51-63		99-105
4		58-70		99-105
5		114		99-105
Transom		166-168		99-105

<b>Stem Offset</b>		
up from baseline	back from HDP	Actual
267	267-279	
305	194-206	
337	153-165	
381	108-120	
457	54-66	
527	26-38	
311 to 387	intersection of chine extension	

<b>Miscellaneous</b>					
Measurement	Actual	Allowable Range	Measurement	Actual	Allowable Range
LOA		4711-4737	Chine radius at st. 1		Max 19
Horizontal transom offset		203-229	Chine radius st. 2 to transom		Max 3
Hull Datum Point height		683-708	Deck height		Max 127
Bow radius		Max 25			

<b>Topside Measurements</b>					
Measurement	Actual	Allowable Range	Measurement	Actual	Allowable Range
Aft end of dagg. slot from Hull datum point		2438-2464	Mast step to sheer (vertical)		390-400
Top of case parallel to baseline		tolerance 2	Mast hole in the deck		Max 256x76
Aft edge of slot perpendicular to baseline		tolerance 2	Length of foredeck		Min 1842
Forward edge of slot perpendicular to baseline		tolerance 6	Length of aft deck		Min 457
Keel to top of daggerboard case		310-313	Sheer strikes		Max 32
Length of daggerboard slot		Max 546	Gunwale radius		Max 12
Width of daggerboard slot		Max 13	Splashboard		Min 51 x 610

Measurer

Stamp nr.

# SNIFE CLASS RACING ASSOCIATION

## MEASUREMENT DATA SHEET FOR CERTIFIED BOATS

Revised February 2019

**This page to be used for all boats.** For measurements in *Italic* refer to the Class Rules

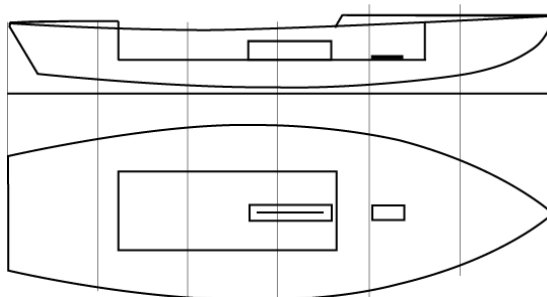
HULL NUMBER	<input type="text"/>	BUILDER	<input type="text"/>
MODEL	<input type="text"/>	YEAR OF MANUFACTURE	<input type="text"/>
OWNER	<input type="text"/>	COUNTRY	<input type="text"/>

BARE HULL	<input type="checkbox"/>	COMPLETE	<input type="checkbox"/>	INCOMPLETE	<input type="checkbox"/>
HULL MATERIAL: WOOD	<input type="checkbox"/>	FIBERGLASS	<input type="checkbox"/>	make note of	
DECK MATERIAL: WOOD	<input type="checkbox"/>	FIBERGLASS	<input type="checkbox"/>	incomplete items	
FROM CERTIFIED MOULD	<input type="checkbox"/>			filling the cells with <b>NO</b>	

HULL WEIGHT (min 125kg)	<input type="text"/>	MAST LENGTH ( <i>Rules C.9.2, F.3.4</i> )	<input type="text"/>
TOTAL WEIGHT (min 172.8kg)	<input type="text"/>	Limiting marks & pin	<input type="text"/>
CORRECTOR WEIGHTS (max 15kg)	<input type="text"/>	Corrector weights (max 100gr)	<input type="text"/>
MOI	<input type="text"/>	BOOM LENGTH (max 2642mm)	<input type="text"/>
Spring set #	<input type="text"/>	Limiting marks & pin	<input type="text"/>
JIB FITTING	<input type="text"/>	POLE LENGTH (max 2642mm)	<input type="text"/>
(279-300mm hor. From Hull Datum Point)		RUDDER DIMENSIONS	<input type="text"/>
max 45mm vert. above sheerline)		Weight (min. 2.72kg)	<input type="text"/>
SHROUDS (1778-1981mm from HDP)	<input type="text"/>	Corrector weights ( <i>Rule C.8.5</i> )	<input type="text"/>
MAST HOLE (min 1494-mm from HDP)	<input type="text"/>	Parallel to transom (tolerance 2mm)	<input type="text"/>
UPPER GUDGEON ( <i>Rule D.2.3</i> )	<input type="text"/>	DAGGERBOARD DIMENSIONS	<input type="text"/>
LOWER GUDGEON ( <i>Rule D.2.3</i> )	<input type="text"/>	Band	<input type="text"/>
GUDGEONS DIAMETER ( <i>Rule D.2.3</i> )	<input type="text"/>	Safety line (max 610mm long)	<input type="text"/>
		Restraining system (hooks or tablet)	<input type="text"/>

Insert the **actual** measurement in the cells marked as

Mark corrector weights position and amount below. Data to be copied on the Official Snipe Label



DATE MEASURED \_\_\_\_\_

MEASURER'S STAMP \_\_\_\_\_

MEASURER'S NAME \_\_\_\_\_

NOTES: