

## SCIRA Measuremen Check Sheet

To be used with the 80/20 true baseline measurement frame

**Owner** \_\_\_\_\_ **Date** \_\_\_\_\_

**Hull** \_\_\_\_\_ **Builder** \_\_\_\_\_ **Material** \_\_\_\_\_

NEW MOULD: FIRST  OR  OF 5      CERTIFICATION RENEW  Y/N

DO NOT COMPLETE IF FROM A CERTIFIED MOULD

<b>Chine</b>						
	Height				Width	
Station	Starboard	Port	Total	Allowable Range	Actual	Allowable Range
1				838-864		527-540
2				724-749		991-1003
3				673-699		1232-1245
4				680-705		1270-1283
5				762-787		1137-1149
Transom				902-927		952-965

<b>Sheer</b>						
	Height				Width	
Station	Starboard	Port	Total	Allowable Range	Actual	Allowable Range
1				1499-1549		895-921
2				1391-1441		1346-1372
3				1333-1384		1511-1537
4				1321-1372		1473-1499
5				1321-1372		1270-1295
Transom				1384-1435		1022-1048

<b>Keel</b>				
Station	Height		Width	
	Actual	Allowable Range	Actual	Allowable Range
400mm		223-235		
1		162		Min 51
2		89-101		99-105
3		51-63		99-105
4		58-70		99-105
5		114		99-105
Transom		166-168		99-105

<b>Stem Offset</b>		
up from baseline	back from HDP	Actual
267	267-279	
305	194-206	
337	153-165	
381	108-120	
457	54-66	
527	26-38	
311 to 387	intersection of chine extension	

<b>Miscellaneous</b>					
Measurement	Actual	Allowable Range	Measurement	Actual	Allowable Range
LOA		4711-4737	Chine radius at st. 1		Max 19
Horizontal transom offset		203-229	Chine radius st. 2 to transom		Max 3
Hull Datum Point height		683-708	Deck height		Max 127
Bow radius		Max 25			

<b>Topside Measurements</b>					
Measurement	Actual	Allowable Range	Measurement	Actual	Allowable Range
Aft end of dagg. slot from Hull datum point		2438-2464	Mast step to sheer (vertical)		390-400
Top of case parallel to baseline			Mast hole in the deck		Max 256x76
Aft edge of slot perpendicular to baseline			Length of foredeck		Min 1842
Keel to top of daggerboard case		310-313	Length of aft deck		Min 457
Length of daggerboard slot		Max 546	Sheer strikes		Max 32
Width of daggerboard slot		Max 13	Gunwale radius		Max 12
Splashboard		Min 51 x 610			

Measurer

Stamp nr.

# SNIPE CLASS RACING ASSOCIATION

## MEASUREMENT DATA SHEET

Revised January 2017

For boats built or modified after January 1, 2017

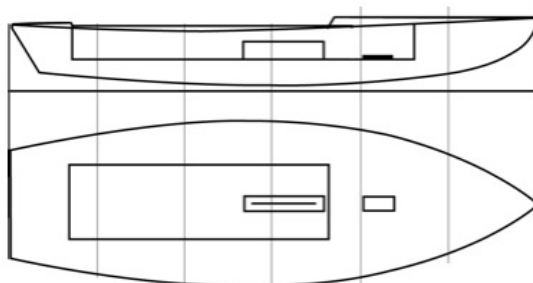
HULL NUMBER	<input type="text"/>	BUILDER	<input type="text"/>
MODEL	<input type="text"/>	YEAR OF MANUFACTURE	<input type="text"/>
OWNER	<input type="text"/>	COUNTRY	<input type="text"/>

BARE HULL	<input type="checkbox"/>	COMPLETE	<input type="checkbox"/>	INCOMPLETE	<input type="checkbox"/>
HULL MATERIAL: WOOD	<input type="checkbox"/>	FIBERGLASS	<input type="checkbox"/>	make note of	
DECK MATERIAL: WOOD	<input type="checkbox"/>	FIBERGLASS	<input type="checkbox"/>	incomplete items	
FROM CERTIFIED MOULD	<input type="checkbox"/>				

HULL WEIGHT (min 125kg)	<input type="text"/>	MAST LENGTH (max 6499mm)	<input type="text"/>
TOTAL WEIGHT (min 172.8kg)	<input type="text"/>	Limiting marks & pin	<input type="text"/>
CORRECTOR WEIGHTS (max 15kg)	<input type="text"/>	Corrector weighths (max 100gr)	<input type="text"/>
MOI	<input type="text"/>	BOOM LENGTH (max 2642mm)	<input type="text"/>
Spring #	<input type="text"/>	Limiting marks & pin	<input type="text"/>
JIB FITTING	<input type="text"/>	POLE LENGTH (max 2642mm)	<input type="text"/>
(279-300mm hor. From Hull Datum Point)		RUDDER DIMENSIONS	<input type="text"/>
max 45mm vert. above sheerline)		Weight (min. 2.72kg)	<input type="text"/>
SHROUDS (1778-1981mm from HDP)	<input type="text"/>	Corrector weight (max 250g)	<input type="text"/>
MAST HOLE (min 1494-mm from HDP)	<input type="text"/>	Parallel to transom (tolerance 2mm)	<input type="text"/>
UPPER GUDGEON (410 +/-3mm)	<input type="text"/>	DAGGERBOARD DIMENSIONS	<input type="text"/>
LOWER GUDGEON (155 +/-3mm)	<input type="text"/>	Band	<input type="text"/>
GUDGEONS DIAMETER (8-8,5mm)	<input type="text"/>	Safety line (max 600mm long)	<input type="text"/>
		Restraining system	<input type="text"/>

Insert the actual measurement in the cells marked as

Mark ballast position and amount below



DATE MEASURED \_\_\_\_\_ MEASURER'S STAMP \_\_\_\_\_

MEASURER'S NAME \_\_\_\_\_

NOTES: