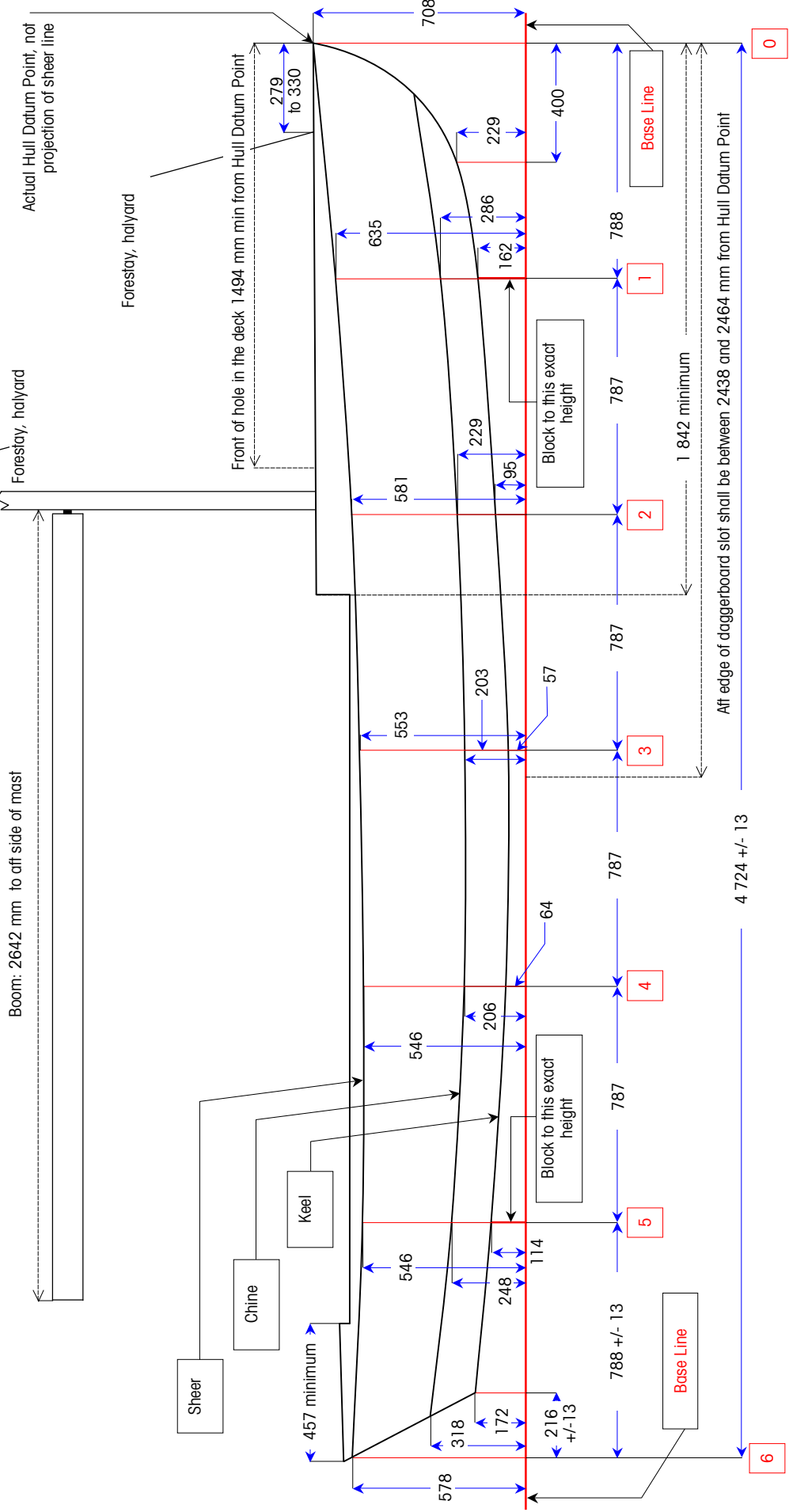


The following tolerances are allowed on the dimensions shown, unless a tolerance is shown on the drawing:

- Keel: +/- 6 on vertical measurements.  
+/- 3 on width, station 2 to stem.
- Chine: +/- 6 on height.  
+/- 6 on width.
- Sheer: +0 -25 on height (including Hull Datum Point).  
+/- 13 on width.

Additional requirements: Refer to Rules.

Stay Rigging Point not less than 4470 mm no more 4572 mm above the mast datum point.  
For boats built after January, 1<sup>st</sup> 2001, 4860 mm - 4962 mm above the heel point.



Sheer

Chine

Keel

Block to this exact height

Base Line

Base Line

6

5

4

3

2

1

0