

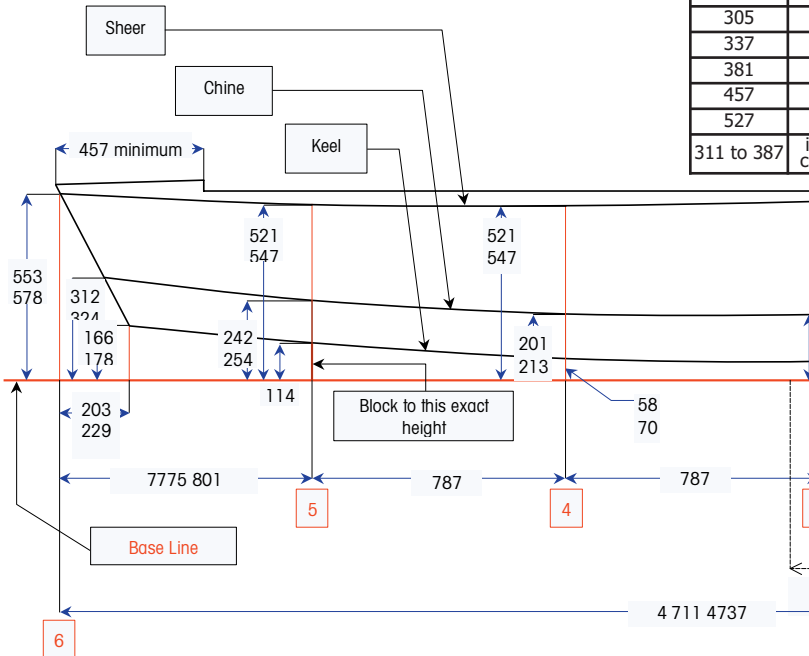
The following tolerances are allowed on the dimensions shown, unless a tolerance is shown on the drawing:

- Keel: +/- 6 on vertical measurements.
+/- 3 on width, station 2 to stern.
- Chine: +/- 6 on height.
+/- 6 on width.
- Sheer: +0 - 25 on height (including stern head).
+/- 13 on width.
- Additional requirements: Refer to Rules.

Boom: 2642 mm to aft side of mast

Table of Stem Offsets

up from baseline
267
305
337
381
457
527
311 to 387



Measurement Data Sheet I
Revised January 2005
Designed by William F. Crosby, 1931

Measure stay intersection regardless of fittings.
 Jib stay, Shrouds and Jib halyard intersect mast not less than 4470 mm no more 4572 mm above the sheer.
 For boats built after January, 1st 2001, 4860 mm – 4962 mm above the butt of the mast.

